

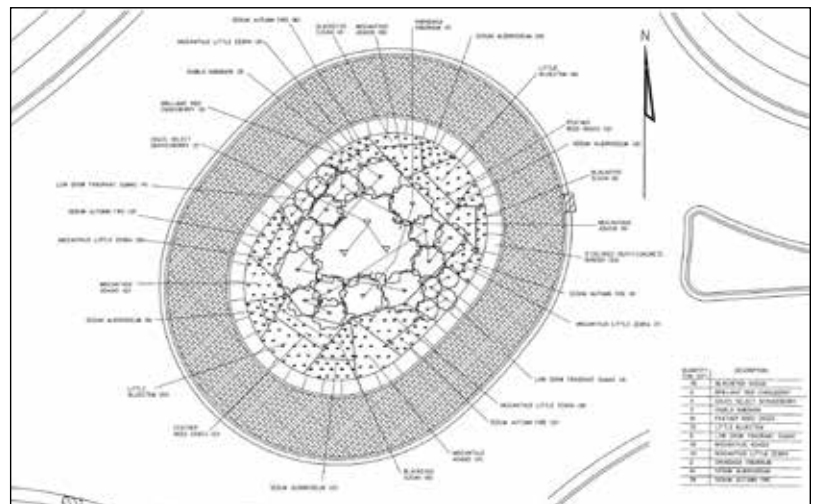


Cty Hwy ID Roundabout, Mt. Horeb, WI

Landscaping is an important component of roundabout design. Properly designed plantings provide visual cues that **draw drivers' attention** to the existence of a roundabout and can be used to preclude un-necessary sight distance on approach causing drivers to naturally **decrease speed, improve yielding and increase safety**.

In addition landscaping features can provide visual cues to enhance way-finding principles, to improve the pedestrian environment and safety while also improving the aesthetic quality of the community. A designer can decrease maintenance requirements by planting selected species in a dense arrangement which naturally prevents the growth of weeds by limiting available space and prevents the need to mow by removing space for grass.

The above images depict a project in Mt. Horeb, Wisconsin where a dense planting layout was used. This layout provides shape and color to the roundabout while minimizing maintenance requirements. Laurel Grindle, Public Works Director for Mt. Horeb, indicates that their crews weed for about 10-15 minutes, 2-3 times during their summer months. This is considerably less time than is spent on the village's 4 other roundabouts which primarily contain grass.



Contact:

Village Public Works Director:
 Laurel Grindle
 608.437.3351
 laurel.grindle@mounthorebwi.info